

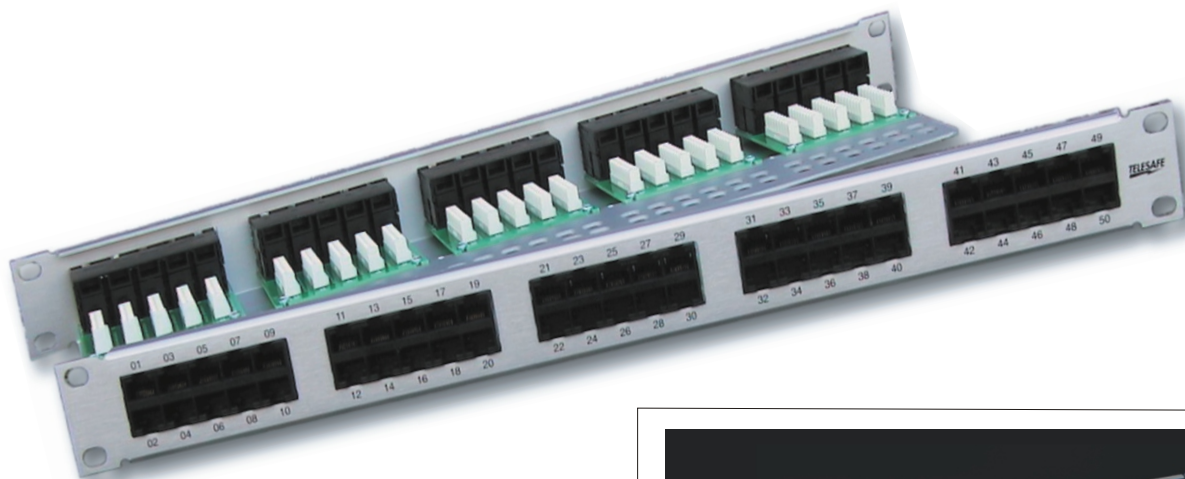
Telephone Patch Panels

The telephone patch panels are an easy and cost efficient way of connecting the PBX or the telephone backbone network to the horizontally structured cabling system, offering standard telephone connection on two pairs (4,5-3,6).

The telephone panels are available with 25, 30, 50 or 100 ports, covering the most commonly used backbone telephone cables. The standard version covers analogue telephones, however, an ISDN version with built-in resistors is available for the 50 port panel, thus offering 25 lines with 2 ports each..

Some features:

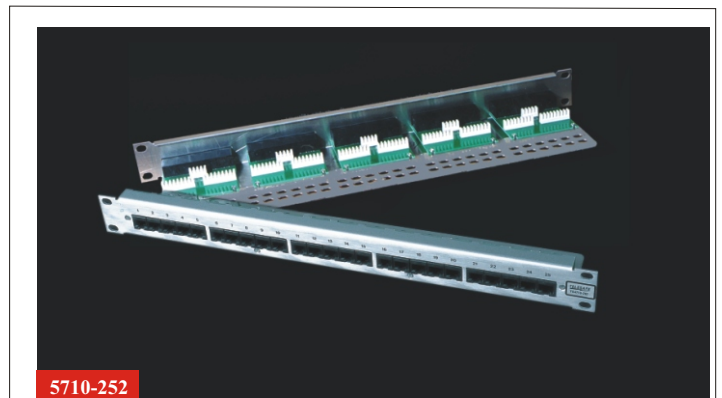
- All panels are equipped with IDC punch down blocks.
- Brushed aluminium design, and 1U height for the 25, 30 and 50-port panels.



5710-503

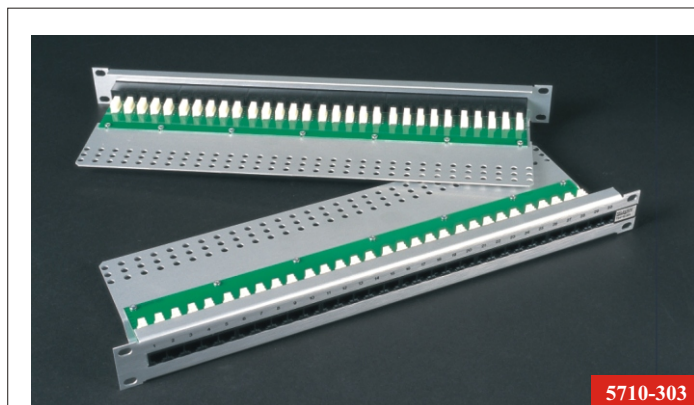
All panels are manufactured out of non-toxic and 100% recyclable material.

15 year product guarantee.



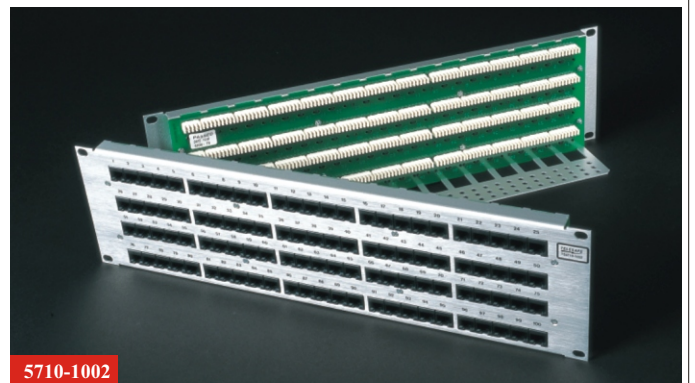
5710-252

Telephone Patch Panel, 25 ports, 1U



5710-303

Telephone Patch Panel, 30 ports, 1U



5710-1002

Telephone Patch Panel, 100 ports, 3U

For ordering information, see next page

Ordering information

Telephone Patch Panels

25 ports (1U)	5710-252
30 ports (1U)	5710-303
50 ports (1U)	5710-503
100 ports (3U)	5710-1002
ISDN panel 2x25 ports, (1U)	5710-50306

Producer:



P.O. Box 234, N-1301 SANDVIKA, Norway
Phone: +47 67807300 Fax: +47 67807301
E-mail: sales@telesafe.no, Internet: www.telesafe.com

Distributor: