

Telco Patch Panels

To connect e.g. an Ethernet Hub with a Telco connector output to a structured cabling system in a clean and proper way, it has been common to use a patch panel with RJ45 connectors at the front, and a Telco connection cable at the rear, to connect the Hub.

As speed increases, and 100BASE-T is becoming more commonly used, the need for such patch panels are increasing, as many of the Hub vendors uses Telco connectors as their interface in order to increase the port density on their active equipment.

Important advantages using Telco panels are that the Ethernet modules will stay "clean", make module changes easy and the indicator LED's easy readable when only one cable is connected.

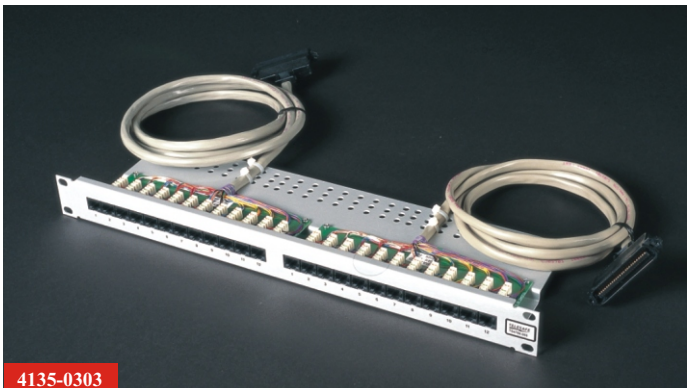
Telesafe produces a family of Telco patch panels that consists of shielded and unshielded panels for either 10 Base-T or 100 Base-T Ethernet applications. The panel for 10 Base-T comes with Telco connectors on a PCB. The panel intended for 100 Base-T Fast Ethernet comes with preterminated cables on IDCs. Cables may be delivered with either 45 or 180 Telco connectors.

All panels are manufactured out of 100% recyclable material.

15 year product guarantee.



4135-1301



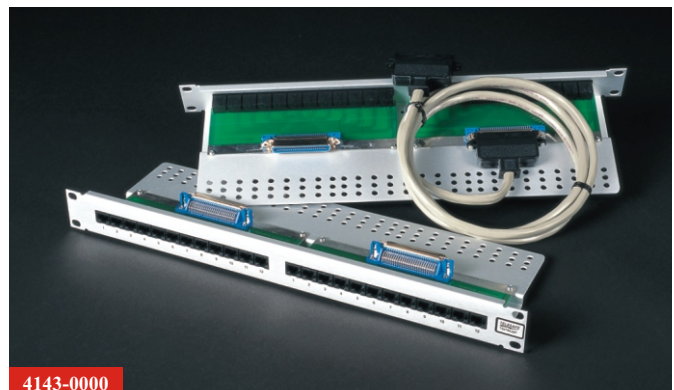
4135-0303

2x 12 port, 2x3 m cable, 180°, unshielded, 100 Base-T



4135-1501

2 x 12 port, 2 x 5 m cable, 45°, shielded, 100 Base-T



4143-0000

2 x 12 port, unshielded, w/Telco connector, 10 Base-T

Ordering information

| Telco Patch Panels Brushed Aluminium colour | Shielded | Unshielded |
|---|-----------------|-------------------|
| 100 Base-T applications | | |
| 2x12-port, 2x2m cable, 180° | 4135-1203 | 4135-0203 |
| 2x12-port, 2x2m cable, 45° | 4135-1201 | 4135-0201 |
| 2x12-port, 2x3m cable, 180° | 4135-1303 | 4135-0303 |
| 2x12-port, 2x3m cable, 45° | 4135-1301 | 4135-0301 |
| 2x12-port, 2x5m cable, 180° | 4135-1503 | 4135-0503 |
| 2x12-port, 2x5m cable, 45° | 4135-1501 | 4135-0501 |
| 10 Base-T applications | | |
| 2x12-ports, 2xTelco connectors | 4143-1000 | 4143-0000 |
| Cables - Telco-Telco | | |
| 2m, 180° connectors | 9063-1233 | 9063-0233 |
| 2m, 45° connectors | 9063-1211 | 9063-0211 |
| 3m, 180° connectors | 9063-1333 | 9063-0333 |
| 3m, 45° connectors | 9063-1311 | 9063-0311 |
| 5m, 180° connectors | 9063-1533 | 9063-0533 |
| 5m, 45° connectors | 9063-1511 | 9063-0511 |

Producer:


P.O. Box 234, N-1301 SANDVIKA, Norway
 Phone: +47 67807300 Fax: +47 67807301
 E-mail: sales@telesafe.no, Internet: www.telesafe.com

Distributor: