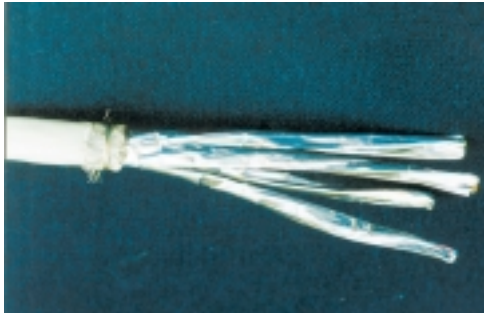
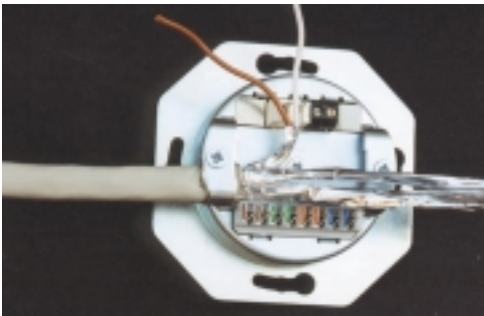


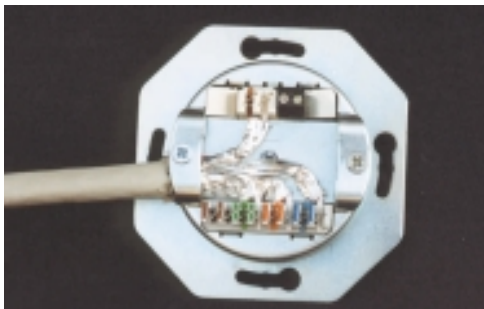
**Fig. 1**  
Dismantle the cable outer jacket approximately 70 mm. Pull the braid backwards over the outer mantle as shown.



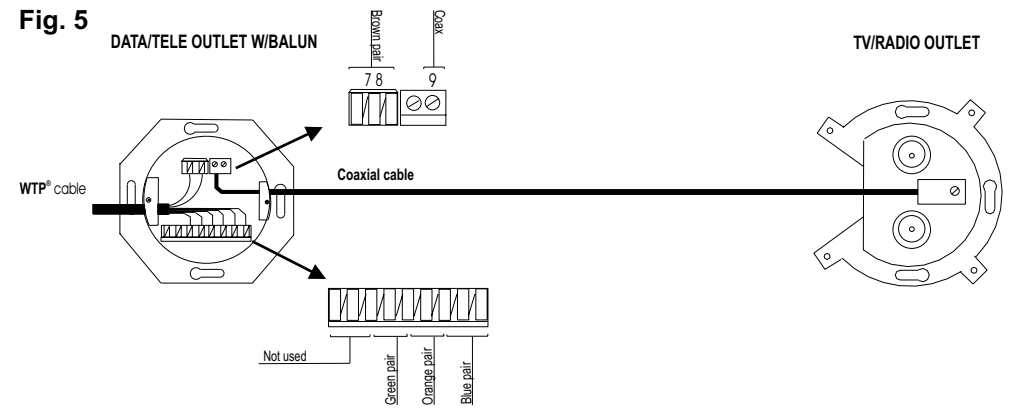
**Fig. 2**  
Cut the braid down to approximately 10 mm.



**Fig 3**  
Place the cable under the strain relief as shown in figure. Tighten the strain relief firmly. Place the **brown** pair in position for termination on the 2 pole LSA + connector. Cut the foil only as much as necessary for the termination of the pair, **but leave it on** right up to the edge of the LSA + connector. Terminate the pair using a Krone termination tool.



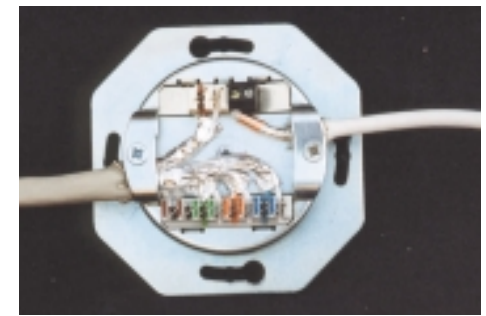
**Fig. 4**  
Terminate the pairs on the 8 pole LSA + connector in the following sequence: green, orange, blue. Cut the foils as much as necessary for the termination of the pairs, but leave the foils on right up to the edge of the LSA + connector. Terminate the pairs using a Krone termination tool. Be sure to follow the colour coding on the LSA connector.



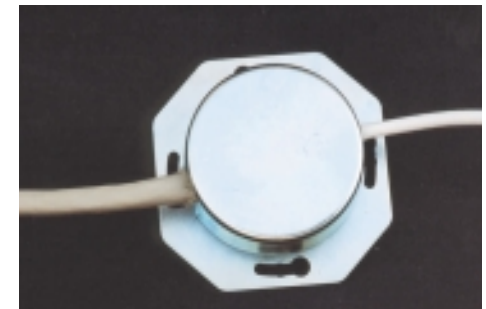
**Fig. 6**  
Prepare the coaxial cable as shown.



**Fig. 7**  
Place the coaxial cable under the strain relief as shown. Terminate the centre conductor on the 2 pole screw plinth. (Any of the two positions can be used). Tighten the strain relief firmly.



**Fig. 8**  
Snap on the shield cover.



# Installation guide



P.O. Box 384, 1372 ASKER, Norway  
Phone: +47 66 76 06 00 Fax: +47 66 76 06 01  
E-mail: [firmapost@telesafe.no](mailto:firmapost@telesafe.no)  
Internet: [www.telesafe.com](http://www.telesafe.com)

**WTP® Multimedia Outlets for TV/Radio, Data and Telephone**